

HOW TO JOIN THE ADVENTURE

DOWNLOAD THE APP

Get the **ECHOES** app for an immersive audiowalk



PICK A START POINT

The plaques can be done in any order, but we do have a few 'official' start points:

1. From the main Ferriby Road entrance.
2. From the Viewing Area near the entrance to the Bridge Footpath.
3. From the Cliff Top Lane entrance.

FOLLOW THE PATH

There are 8 plaques in total, can you find them all?

CREATE YOUR RUBBINGS

Simply place your paper over the plaque and rub with a crayon or pencil to capture the design.

FINISH THE TRAIL

Once you've collected rubbings from all the plaques - why not snap a photo and tag in our social media accounts?



/HUMBERBRIDGEOFFICIAL



@HUMBRIDGENEWS



/HUMBRIDGENEWS/

HUMBER BRIDGE RUBBING TRAIL MAP



EXPERIENCE THE BRIDGE IN A NEW WAY!



There are **8** rubbing plaques across our estate.

Can you find them all?



All you need is paper & crayons!

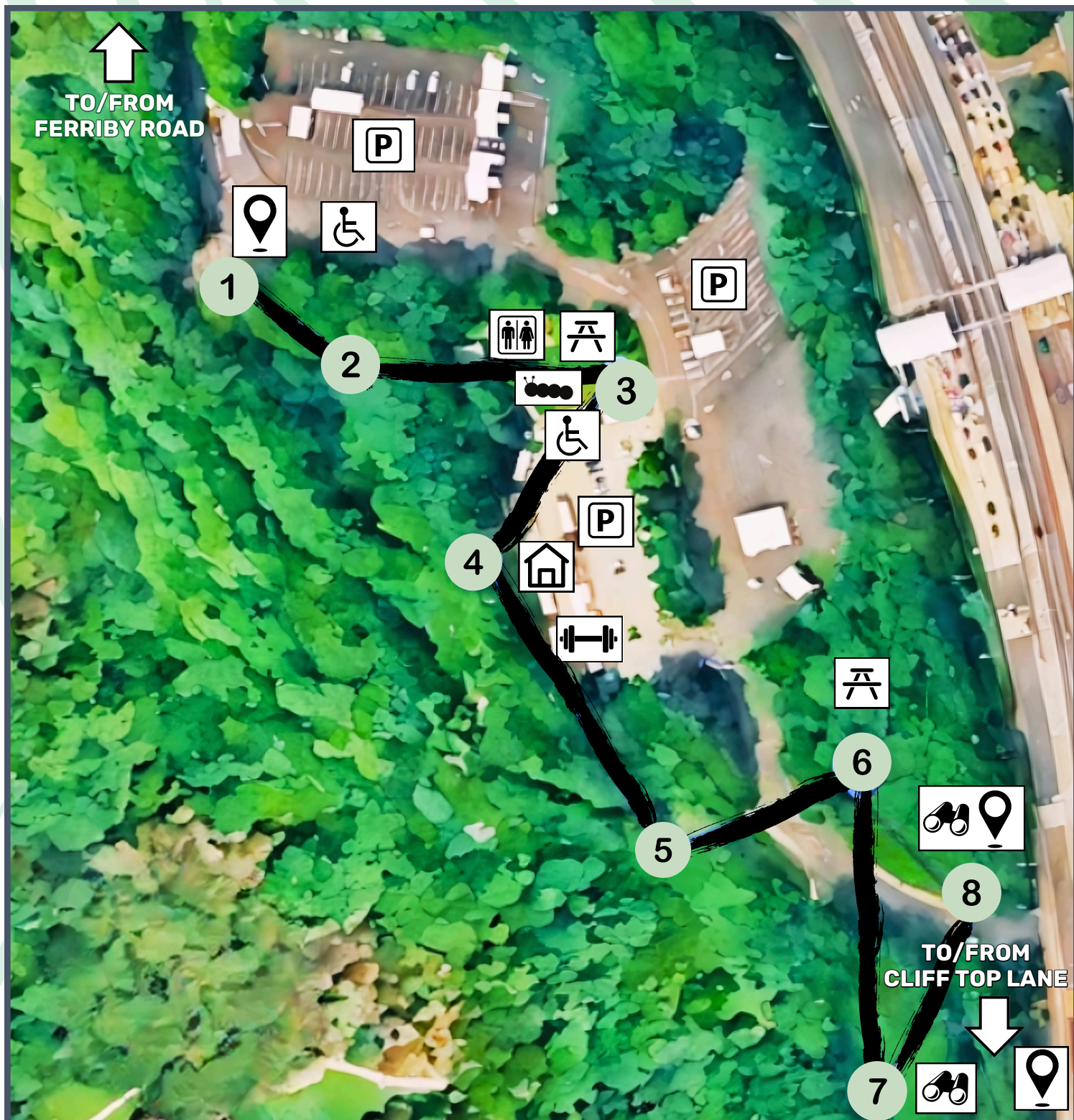
Make sure you download the **ECHOES** app for the full audiowalk experience!
(See back page)



Have fun - take photos & tag in our social media accounts.

Let us know what you think!

-  **PARKING**
-  **DISABLED PARKING**
-  **TOILETS**
-  **PICNIC AREA**
-  **CATERPILLAR BENCH**
-  **OUTDOOR GYM**
-  **VIEWING AREA**
-  **WELLBEING HUB**
-  **START POINT**



- PLAQUE CHECKLIST**
- 1** **ROAD DECK**
 - 2** **CABLE BANDS**
 - 3** **ANCHORAGE**
 - 4** **CAISSON**
 - 5** **CABLE HANGER**
 - 6** **A TOWER**
 - 7** **DECK BOX**
 - 8** **HUMBER BRIDGE**